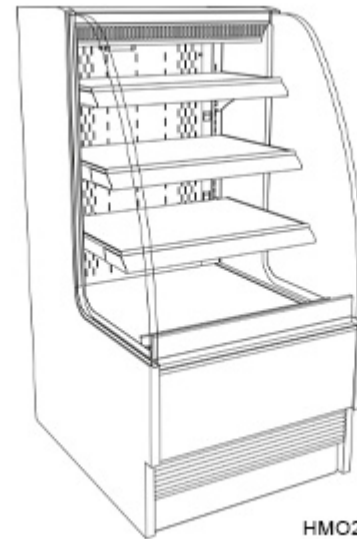


- HMO2653R 26-3/4"L x 34-1/8"D x 53"H
- HMO3953R 38-3/4"L x 34-1/8"D x 53"H
- HMO5153R 50-3/4"L x 34-1/8"D x 53"H
- HMO6353R 62-5/8"L x 34-1/8"D x 53"H

### Included

- Breeze w/EnergyWise s/c refrigeration
- Clear glass shelves, lighted (LED 3500K)
- Compressor air rear intake, front discharge. Toe kick cannot be blocked
- Condensate pan (self-contained refrig. only)
- Flat front panel
- Integrated average product temperature of 40°F or less
- LED 3500K top & shelf lights
- One year parts & labor; 5 year compressor warranty
- Open reach-in front
- Shelving removable and adjustable on 1" centers
- Upper & lower rear areas white



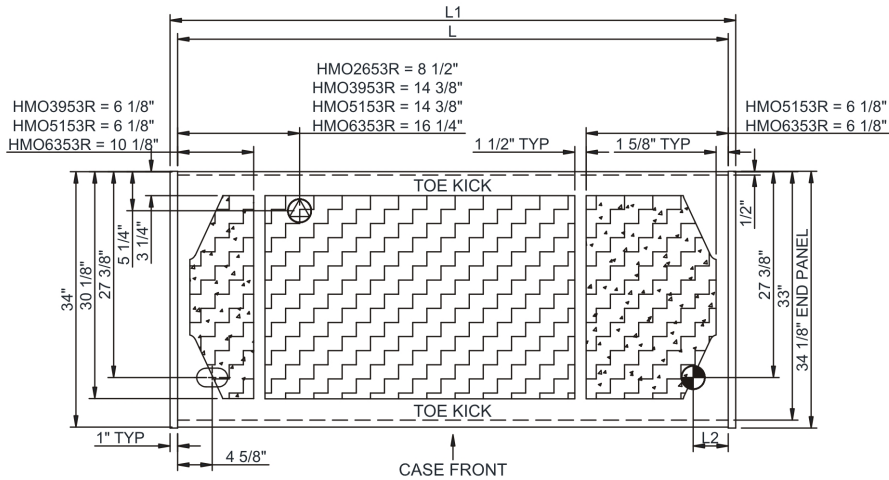
HMO2653R

| Specify                    | Standard Features   | Additional Options  |
|----------------------------|---|---|
| <b>EXTERIOR COLOR</b>      | • Laminated (non-premium) Confirm pattern/grain direction | • Laminated (premium) Confirm pattern/grain direction<br>• Stainless steel (includes rear of case)  |
| <b>INTERIOR COLOR</b>      | • Black   | • Stainless steel<br>• White  |
| <b>REAR EXTERIOR COLOR</b> | • Painted - White   | • Painted - Black<br>• Stainless steel (w/stainless ext. only)  |
| <b>TRIM COLOR</b>          | • Black   | • Silver  |
| <b>BASE</b>                | • Levelers  | • 6"H legs<br>• Casters (n/a with remote)   |
| <b>END PANEL LEFT</b>      | • Full end panel w/mirror interior                        | • Cutaway with glass - cases cannot be joined w/o end panels  |
| <b>END PANEL RIGHT</b>     | • Full end panel w/mirror interior                        | • Cutaway with glass - cases cannot be joined w/o end panels  |
| <b>UPPER REAR</b>          | • Solid back panel  | <sup>1</sup> • Clear glass rear sliding doors w/o lock<br><sup>2</sup> • Solid rear swinging door(s) w/o lock (specify hinge LH or RH)  |
| <b>ELECTRICAL CONNECT</b>  | • 6' Straight blade power cord (self-cont.)               | • 6' Locking power cord (self-cont.)<br>• Electrical leads (remote)   |
| <b>REFRIGERATION</b>       | • Breeze w/EnergyWise s/c refrigeration                   | • Note: Remote doesn't incl Conds unit. Floor drain reqd.<br>• Remote w/thermostat, solenoid & TXV  |
| <b>MISCELLANEOUS</b>       |   | • Rear door lock<br>• Second year parts & labor warranty (excludes compressor)  |
| <b>ACCESSORIES</b>         |   | • Clean Sweep® coil cleaner (n/a w/remote)<br>• Night curtain, retractable, non-locking<br>• Price tag molding (matches interior color)<br>• Removable wire security cover, locking |

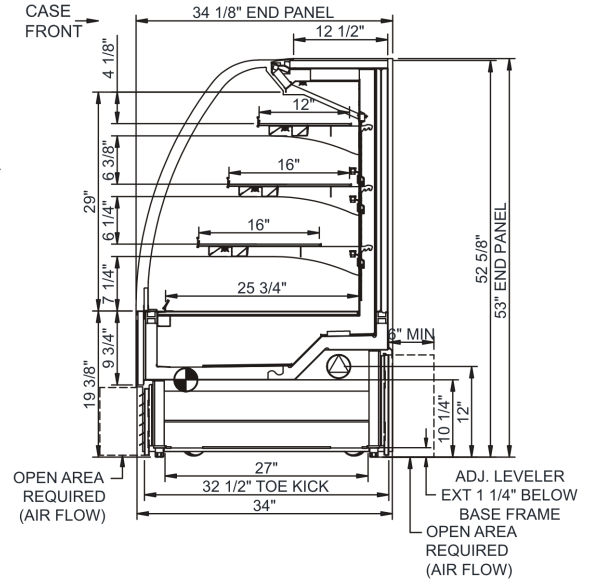
Option Notes: 1 - HMO3953R; HMO5153R; HMO6353R  
2 - HMO2653R

|  |   |                                  |
|--|---|----------------------------------|
| <b>Intended Environment:</b> Type I - Designed to operate in ambient conditions of 75°F with 55% relative humidity unless noted otherwise in system information below. |   |                                  |
| <b>Zone</b>  | <b>Intended Product To Be Displayed</b> | <b>Warmest Avg Prod Temp ° F</b> |
| 1  | Packaged refrigerated products          | 40                               |

**PLAN VIEW**



**SIDE VIEW**



**NOTE: ALL DIMENSIONS APPROXIMATE**

- ELECTRICAL JUNCTION BOX (SUPPLIED WITH 6" LEADS OR POWER CORD).
- REFRIGERATION LINE CONNECTION.
- SELF-CONTAINED CASE SERVICE ACCESS AREA.
- LOCATION OF DRAIN TUBE FOR REMOTE REF. ONLY (SUPPLIED WITH 3/4" OR 1 1/2" PVC TUBE).
- REMOTE FLOOR SINK & UTILITIES ACCESS AREA.
- DRY CASE SERVICE ACCESS AREA.

| Model Technical Specifications |       |       |      |                        |            |         |     |      |          |       |       |                 |       |                  |                  |        |
|--------------------------------|-------|-------|------|------------------------|------------|---------|-----|------|----------|-------|-------|-----------------|-------|------------------|------------------|--------|
| Model                          | L"    | L1"   | L2"  | System Circuit Volts   |            |         | Phs | Freq | Amps *** | Watts | Wires | NEMA Plug       | SST   | Conv. Rack RTU/H | Para. Rack RTU/H | Est Wt |
| HMO2653R                       | 24.75 | 26.75 | 4.88 | Remote(Type I)         | Circuit #1 | 110-120 | 1   | 60   | 1.11     | 116   | 2+G   | Leads Multiple  | 24.00 | 2566             | 2376             | 650    |
|                                |       |       |      | Self-Contained (R513A) | Circuit #1 | 110-120 | 1   | 60   | 14.84    | 1,234 | 2+G   | 5-20P or L5-20P | N/A   | N/A              | N/A              |        |
| HMO3953R                       | 36.75 | 38.75 | 4.88 | Remote(Type I)         | Circuit #1 | 110-120 | 1   | 60   | 1.20     | 131   | 2+G   | Leads Multiple  | 24.00 | 3758             | 3480             | 800    |
|                                |       |       |      | Self-Contained (R449A) | Circuit #1 | 110-120 | 1   | 60   | 14.56    | 1,273 | 2+G   | 5-20P or L5-20P | N/A   | N/A              | N/A              |        |
| HMO5153R                       | 48.75 | 50.75 | 4.88 | Remote(Type I)         | Circuit #1 | 110-120 | 1   | 60   | 2.03     | 210   | 2+G   | Leads Multiple  | 24.00 | 4730             | 4380             | 900    |
|                                |       |       |      | Self-Contained (R449A) | Circuit #1 | 110-120 | 1   | 60   | 16.00    | 1,639 | 2+G   | 5-20P or L5-20P | N/A   | N/A              | N/A              |        |
| HMO6353R                       | 60.63 | 62.63 | 4.88 | Remote(Type I)         | Circuit #1 | 110-120 | 1   | 60   | 1.90     | 110   | 2+G   | Leads Multiple  | 20.00 | 5702             | 5280             | 1,100  |
|                                |       |       |      | Self-Contained (R449A) | Circuit #1 | 208-240 | 1   | 60   | 12.00    | 1,920 | 2+G   | 6-15P           | N/A   | N/A              | N/A              |        |

\*\*\* Does not include electric defrost on freezer models.

**Regulatory Approvals:**

All Models  
 Accordance with AHRI Std 1200  
 ETL Listed to UL 471  
 ETL Listed to CAN/CSA 22.2 No. 120  
 ETL Sanitation to NSF/ANSI 7

In Accordance with  
**AHRI Std 1200**

**DOE 2017**  
 Energy Efficiency  
 Compliant

**Important Notes:**

- 1) ELECTRICAL NOTE: If GFCI is required, a GFCI breaker MUST be used in lieu of a GFCI receptacle
- 2) Units are supplied with levelers. They must be adjusted during installation to ensure the unit is level and plum.
- 3) 35" Minimum door entry clearance required (without shipping skid).

**⚠ WARNING:** This product can expose you to chemicals, including Urethane (Ethyl Carbamate), which are known to the State of California to cause cancer and birth defects or other reproductive harm. For more information go to [www.P65Warnings.ca.gov](http://www.P65Warnings.ca.gov).